

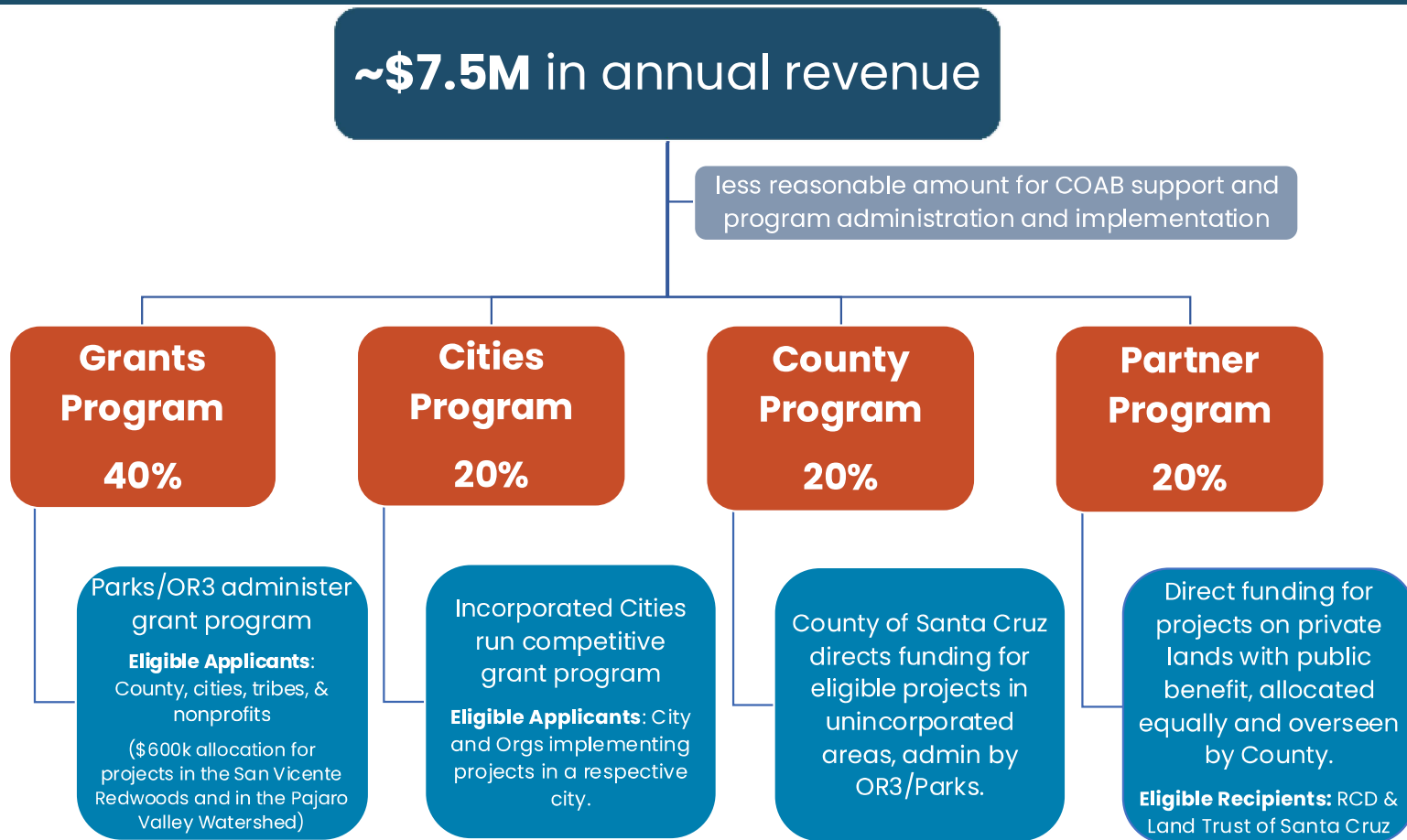


MEASURE Q:

Funding Distribution Overview

Emilia Gamboa
Department Fiscal Officer
Parks, Open Space, & Cultural Services

Funding Distribution Overview



Funding Allocation Timeline



August 2025

Parcel tax submittal to be included on property tax bills



December 2025

1st installment of property taxes due
50% distributed to all 4 programs



April 2026

2nd installment of property taxes due
45% distributed to all 4 programs



June 2026

5% of funds or “true-up” distributed to all 4 programs

Anticipated Funding Distribution in FY 2025–26

based on preliminary budget and subject to change



Grant Program

~ \$2.8M with no more than 5% for administration



Cities Program

Capitola \$200k

Santa Cruz ~ \$546k

Scotts Valley \$200k

Watsonville ~ \$456k



County Program

~ \$1.4M



Partner Program

Resource Conservation District ~ \$700k

Land Trust of Santa Cruz County ~ \$700k

Questions?

